

Call today. For more information, call 1-800-ASK-XEROX or visit us at www.xerox.com/centrawareweb

XEROX®

Technology | Document Management | Consulting Services

device management software

Minimum System Configuration*

SERVER REQUIREMENTS

- PC with PIII 600 MHz or higher
- 512 MB RAM or higher recommended
- 3.0 GB free disk space

OPERATING SYSTEM / SOFTWARE REQUIREMENTS

- Windows® XP / 2003
- Windows 2000 Professional, Server or Advanced Server
- Internet Information Services 5.0 or higher
- TCP / IP enabled network

CLIENT REQUIREMENTS

The CentreWare Web client interface is web-browser based and can be accessed on a platform that supports the following:

- Microsoft® Internet Explorer version 6.0 or higher
- Netscape Navigator version 6.2 or higher

*For a complete list of system configuration requirements please refer to the "Read Me" file (listed under "Related Links") located at: www.xerox.com/centrawareweb

The image displays three screenshots of the Xerox CentreWare Web interface. The top-left screenshot shows a printer management page for a group named 'Second Floor Bldg 111', listing various printer models and their statuses. The top-right screenshot is a 'Xerox CentreWare® Web Status Report' for a server named 'scott-playground', showing a list of printers that need attention with columns for IP Address, Printer Model, Manufacturer, Printer Status, and Printer Location. The bottom-left screenshot shows a detailed view of a printer named 'Leland Gaurt' (Xerox Phaser 4400), displaying various configuration and status options.

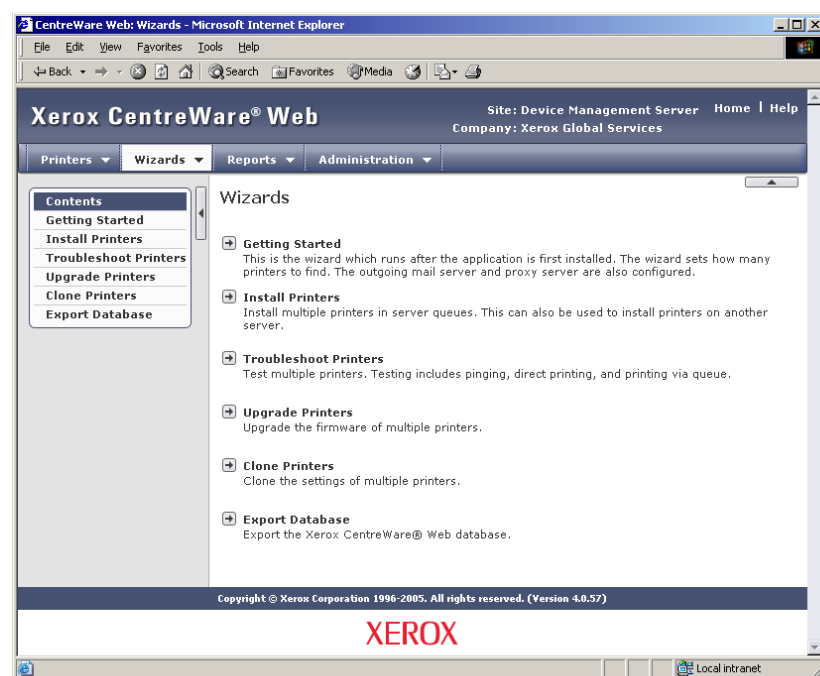
Effectively Manage Output Devices

The image shows a screenshot of the Xerox CentreWare Web Reports page as viewed in a Microsoft Internet Explorer browser. The page title is 'Xerox CentreWare® Web' and the site is identified as 'Device Management Server' for 'Company: Xerox Global Services'. The 'Reports' section is active, displaying a list of available reports: 'Printer Asset Report', 'Printer Status Report', 'Page Count History Report', and 'Alert History Report'. Each report has a brief description of its content.

Get more value from your IT infrastructure

Innovative web-browser based software that installs, configures, manages, monitors, and reports on networked printers and multi-function devices in the enterprise – regardless of manufacturer.

Cut costs, intelligently manage networked output assets and increase the return on your IT investment.



CentreWare Web Wizards provide a guide to using features and functions, stepping system administrators through common tasks and helping them use the software to its full potential.

See Everywhere

Quickly and easily check the pulse of your infrastructure. Keep it healthy and functioning so you can keep working.

Think of Xerox CentreWare Web as your eye on the infrastructure – and the way people use output devices to get work done. It installs, configures, manages, and troubleshoots print devices and queues for virtually all brands. It provides a customized summary status of SNMP printers, multifunction devices and queues within your network – on demand from virtually any web browser.

Know Everything

Make decisions with CentreWare Web based on statistical data rather than best guesses.

CentreWare Web generates extensive, immediately actionable reports on devices, status, accounting, and alert history. Reports can be scheduled and customized by groups of devices, helping you determine how efficiently resources are being used.

Take Control

A firm grasp on network devices add savings to your bottom line.

For offices looking to cut costs, CentreWare Web is a foolproof tool to get tight control over networked document output devices. The volume of paper is growing exponentially in the office, which means your costs are too.

Use CentreWare Web's SMart eSolutions feature to simplify ownership and administration of your Xerox equipment.

Meter Assistant automatically submits meter reads to Xerox, eliminating manual collection and reporting and increasing billing accuracy.

Supplies Assistant proactively manages your Xerox black dry ink supplies, ensuring the right supplies are on hand at the right time with no involvement on your part.

Make CentreWare Web the expert – and you don't have to be one.

Manage Devices Intelligently

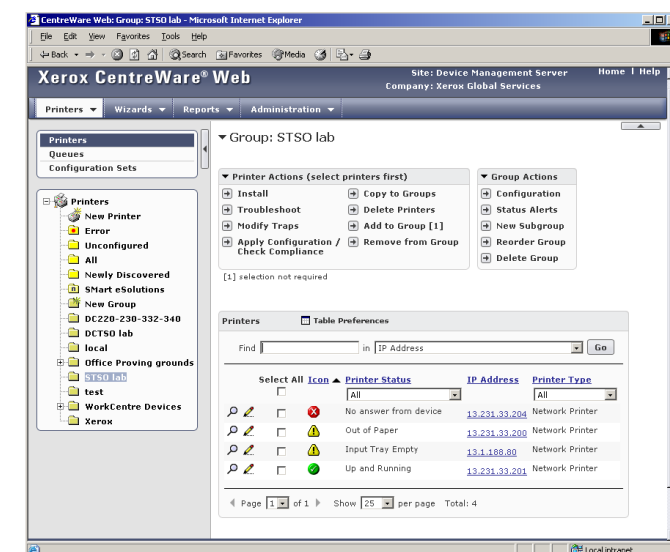
Install, configure and monitor networked devices – right from any desktop.

CentreWare Web helps systems administrators manage diverse document production environments from a single location using a web browser to perform multiple administrative functions.

System Administrators and Help Desk staffs enjoy new productivity with a single, easy, instant means of gathering, organizing, managing, protecting and distributing a wide range of device information – and presenting it in a useful, actionable way.

See what's occurring on your network in real time from anywhere. Manage intelligently from there.

Complex tasks become simple – everybody wins.



Work Simply, Easily

CentreWare Web's intuitive user interface makes it simple and easy to use even advanced features.

It employs dynamic menus, a customizable view and a tree structure that helps even first-time users get up to speed within minutes – including an extensive built-in help function to help resolve issues quickly.

IT/System Administrators enjoy options for customizing printer discovery methods, configuration sets, administrator information and settings for network, SNMP and statistical data collection.

Enterprise Benefits

- Ease of deployment and administration to maximize productivity of IT staff
- Supports Xerox and any RFC 1759 SNMP compliant printers – see your entire network, independent of manufacturer
- Reduce service calls and downtime through proactive response to alerts
- Protect against unauthorized changes with Windows® 2000 native security
- Collect and distribute total billing meter and usage data for networked devices using the SMart eSolutions feature
- Ensure more accurate meter reads for accurate bill-back to appropriate devices or groups
- Track device use over time to intelligently leverage assets
- Get consistent reports in standard formats – comprehensive, accurate, easy to read, easy to understand, immediately actionable
- Schedule and customize data collection with daily, weekly, monthly or annual reports

System Administrator Benefits

- Use a web browser to set up and configure devices, check system status, troubleshoot problems, track print usage, change settings, determine supply requirements
- Microsoft® Visual Studio® .NET code base enables data exchange between web services and applications
- "Email alert" on printer and queue alerts
- Query of MS Active Directory enables printers to enhance print discovery and queue management
- Enhanced device discovery to handle non-IETF MIB compliant printers (i.e. HP® JetDirect-based printers)
- Distinguish fleets of devices by placing into default or custom-defined groups
- Group polling feature – set polling intervals so groups are polled by priority
- Manage SNMP printers in the enterprise from anywhere – the office, on the road, or from home
- Simplify device integration – install, configure and view settings for all network protocols and set device defaults from a centralized location
- Easily identify, diagnose and troubleshoot problems for quick action
- Configuration sets provide an ability to establish a template that can define standard network protocol and scanning settings across like devices
- "Clone" feature applies settings from one cloning supported device to other like devices – a significant time and energy saver